

4,998 sf plan
12 Bar Stools
18 Bar seating
156 Dining Seating
186 Total Seating

RIBCRIB Prototype

The client had a store design already in use that they felt was too complex and costly to continue with to develop their brand. We first reduced the floor plan to below 5,000 sf. then we simplified the structure of the building and enhanced qualities of the existing design and gave it a more bold look.

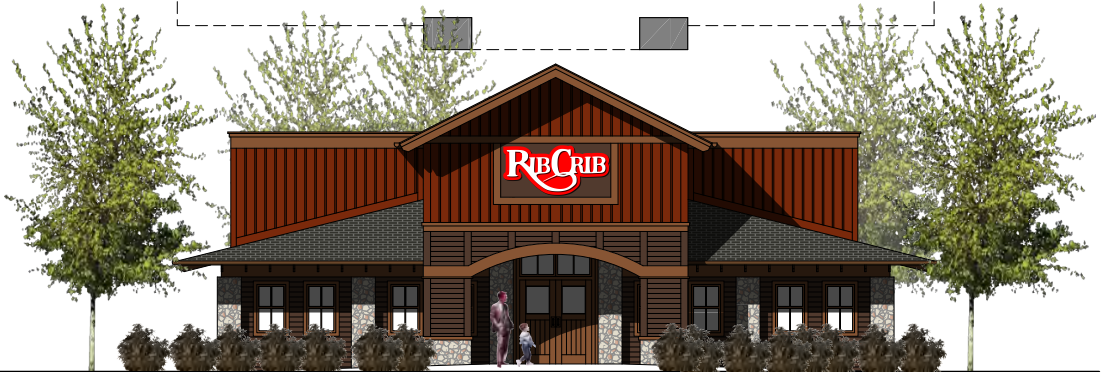


Photo of existing store before reimagining